

MESL School of Marine Taxonomy

Helping you fulfil your potential

Introduction to Benthic Taxonomy

A two week course to be held at the Marine Biological Association in Plymouth. This course is aimed at undergraduates and recent graduates wishing to develop their benthic identification skills. The course will ;

- introduce students to the concepts and uses of benthic taxonomy
- provide experience of both intertidal and subtidal sample collection, preservation and analysis
- provide training in the use and construction of dichotomous keys (including online resources)
- develop taxonomic understanding and exposure

More details of this course will be available shortly

Specialist Taxonomy Short Courses

Short courses concentrating on particular phyla, families or interest groups. These courses are aimed at graduates and practising taxonomists wishing to enhance their knowledge of marine taxonomy. Demonstrable experience in marine taxonomy or completion of the Introduction to Marine Taxonomy is a prerequisite to these courses. You will only be awarded a place on a particular course if we are happy that you have the required prior knowledge.

****Upcoming Specialist Taxonomy Training Courses****

Cirratulidae & Spionidae Identification Workshop, November 2010 – **Booking Now**

Introduction to Amphipod families, February 2011

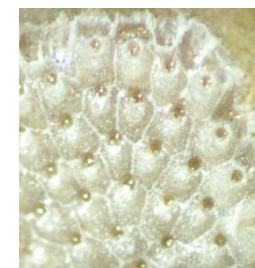
Alien and Introduced Marine species, March 2011

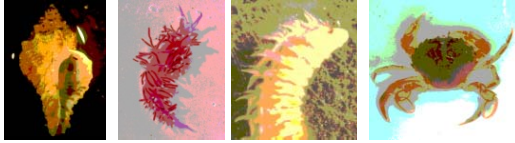
Tailored Taxonomic Training

In addition to the structured training programmes offered by the School of Marine Taxonomy, we offer bespoke taxonomic training to students currently enrolled on an MSc or PhD programme, tailored to suit the particular needs of the individual. More details including typical training structures and costs will be available shortly, in the meantime please contact Bryony Pearce (Research Director) to discuss your individual requirements (01225 442211).

MSc Placements

MSc placements are available on an ongoing basis for students currently enrolled on an MSc in Marine Biology or related discipline. If you would like a placement with Marine Ecological Surveys Ltd please contact Bryony Pearce (Research Director) to discuss your requirements and areas of interest (01225 442211).





MESL School of Marine Taxonomy

Helping you fulfil your potential

Cirratulidae & Spionidae Identification Workshop

26th-28th November 2010

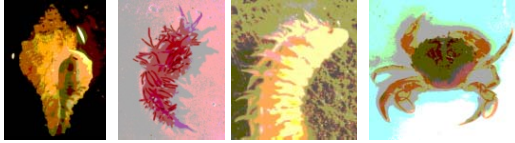
Marine Ecological Surveys Ltd, 3 Palace Yard Mews, Bath, BA1 2NH



This course will enable participants to gain experience and develop confidence in the identification of species of Spionidae and Cirratulidae, two common families of marine annelids. The course will include an introductory talk on each of the groups covering body parts, terminology and use of the important dichotomous keys for each group. The main focus of the weekend will be microscope work, allowing students to work through specimens from the two families at their own speed. Participants will carry out identification using industry standard keys and papers with the assistance of two professional marine biologists who between them have over fifteen years experience of processing benthic samples. Specimens from the majority of British genera will be available. Time will be allocated at the end of the course for participants to look at their own specimens with assistance from the course leaders.

Course fees include membership to the Marine Biological Association of the UK. Follow links below for full details of membership benefits. Existing members of the Marine Biological Association are entitled to a 10% discount on the rate.

MBA website http://www.mba.ac.uk/membership_individual.php



MESL School of Marine Taxonomy

Helping you fulfil your potential

Cirratulidae & Spionidae Identification Workshop

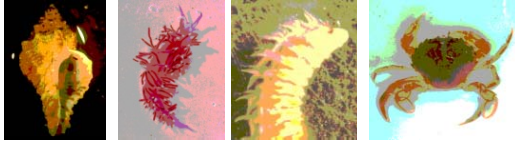
26th-28th November 2010

Marine Ecological Surveys Ltd, 3 Palace Yard Mews, Bath, BA1 2NH



Course Programme

	09.00 – 10.45		11.00 – 13.00	13.00 – 13.30	13.30 - 15.15		15.30 - 17.00	Evening
Friday 26 th November		Coffee			Course Registration From 15.00	Coffee	Workshop welcome and introductory lecture on Cirratulids and Spionids	Ice Breaker Wine and Cheese at course venue
Saturday 27 th November	Cirratulid Microscope Session 1		Cirratulid Microscope Session 2	Lunch provided	Cirratulid Microscope Session 3		Spionid Microscope Session 1	Workshop Dinner (Venue to be confirmed)
Sunday 28 th November	Spionid Microscope Session 2		Spionid Microscope Session 3	Lunch provided	Own sample / questions session		Workshop Wrap-up	



MESL School of Marine Taxonomy

Helping you fulfil your potential

Cirratulidae & Spionidae Workshop



Course Availability & Pricing

	Spaces	Full-Time Students *	Non – Students*
Nov 2010	10	£175	£225

Course fees include membership to the Marine Biological Association of the UK. Follow links below for full details of membership benefits. Existing members of the Marine Biological Association are entitled to a 10% discount on the rate.

MBA website http://www.mba.ac.uk/membership_individual.php

A booking form can be downloaded [here](#)