



Marine Ecological Surveys Limited

Over 30 years of experience in Environmental Impact Assessment, Site Appraisals, Eco-Audit & monitoring programmes and research in the marine environment

Winter Wonderland at MESL....

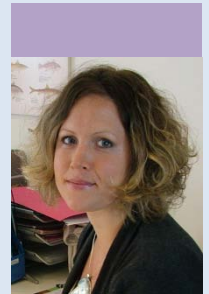


MESL takes on Pisa!

MESL held their first internal conference in Pisa in October. Each member of staff gave a presentation on their current research or an area of particular interest. With such diverse presentations as the ecology of *Sabellaria spinulosa*, the pros and cons of PhyloCode, Marine Conservation Zones and habitat modelling, there was a presentation to fascinate everyone. Dr Seiderer, Managing Director of MESL, said "The conference was a great success with all presentations exceeding our expectations in both content and quality of delivery. It's proven to be an excellent opportunity for both personal and professional development for the team." The new MESL flag, designed by our Operations Coordinator Jen Gallyot, was also unveiled at the conference and even featured briefly at the top of the Leaning Tower!

Launch of sister company Gardline Caledonia

MESL's Research Director, Bryony Pearce, relocated to Scotland last year to set-up a sister-company Gardline Caledonia Ltd. The company, based in the heart of Glasgow city centre, was registered in September and has now begun trading. Gardline Caledonia will draw upon the expertise and experience of MESL as well as the wider Gardline Group in order to provide a complete range of marine services in support of offshore developments, marine planning and nature conservation in Scotland. Services provided by the new company will include seabed and pelagic resource assessments, habitat and biotope mapping, marine wildlife (mammal and seabird) monitoring and assessments, geophysical and geotechnical surveys, metocean studies and marine planning services.



Commercial projects at MESL

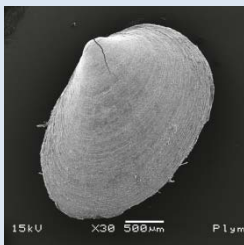
DP World have recently announced that the London Gateway Port (www.londongateway.com), for which MESL have provided all marine ecological surveys and consultancy support, will receive its first vessels in late 2013. On the renewables front, MESL will soon be publishing a series of benthic biological reports produced as part of their long-standing involvement in the East Anglia Offshore Windfarm (EAOW) project including a characterisation report for the EAOW zone, a contribution to the Preliminary Environmental Information report and a baseline report on the proposed cable route corridor. In addition, MESL will be undertaking several other renewables-related surveys over the coming months. MESL have completed a seabed imagery survey across the proposed cable route for the Navitus Bay Wind Park (west of the Isle of Wight) and will be executing a monitoring programme in early 2012 for Vattenfall's Thanet Offshore Windfarm project, presently the world's largest operational windfarm, for which MESL previously undertook the characterisation and pre-construction surveys. See: www.eastangliawind.com; www.navitusbaywindpark.co.uk; www.vattenfall.co.uk/en/thanet-offshore-wind-farm.htm.

MESL School of Marine Taxonomy courses

The MESL School of Marine Taxonomy has opened bookings for the following upcoming courses: Sabellid, Serpulid and Eunicid Identification Workshop with Dr Maria Cristina Gambi, Professor Adriana Giangrande and Dr Margherita Licciano from 5th-9th March 2012 at the Marine Ecological Surveys Ltd, Bath; Scaleworm Identification Workshop with Dr Ruth Barnich from 12th-15th July 2012 at Marine Ecological Surveys Ltd, Bath; and the annual Benthic Taxonomy Summer School from 18th-29th June 2012 at the Marine Biological Association of the UK (MBA), Plymouth. Please see our website for more details and booking forms: www.seasurvey.co.uk/taxonomy-school/calendar



MESL School of Marine Taxonomy
Helping you fulfil your potential



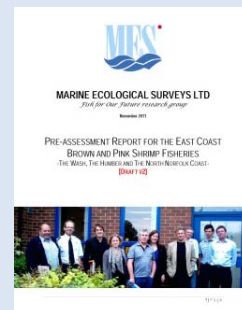
New papers published

Several MESL staff have recently had scientific papers published in peer-reviewed journals. These papers stemmed from newly recorded distributions of several species following the Regional Environmental Characterisation (REC) surveys conducted over the past few years, funded by the MALSF. Please contact MESL for more information.

- Colcombe, A.L. & Hill, J.M. 2011. A second British site for *Coracuta obliquata* (Chaster 1897) (Mollusca, Bivalvia) in the southern North Sea. *Journal of Conchology*. 40(5) 569-570.
- Griffin, R. Herbert, R.J.H. and Pearce, B. 2011. New UK recordings of the mantis shrimp, *Rissoides desmaresti* (Crustacea: Stomatopoda), provided by broad-scale mapping projects. *Marine Biodiversity Records*, 4, e80. doi:10.1017/S1755267211000765.
- Delduca, E. 2011. New record of depth distribution for the cheilostome bryozoan *Cauloramphus spinifer*. *Marine Biodiversity Records*, 4, e71. doi:10.1017/S1755267211000686.

Sustainable fisheries work

MESL's Fish For Our Future (FFOF) research group have recently completed the 'East Coast Brown and Pink Shrimp Fisheries Pre-assessment Report' on behalf of shellfish processors in King's Lynn. This report has provided recommendations for improving sustainability should the fisheries wish to proceed to full Marine Stewardship Council (MSC) assessment in the future. MESL are currently in the process of seeking accreditation to become an official MSC certifier. This would enable MESL to carry out full MSC assessments and certify fisheries where they meet specific criteria for sustainability. This move is especially important as demands for sustainable fish increase particularly as the UK government's buying standards now requires all government caterers to source fish from demonstrably sustainable fisheries.

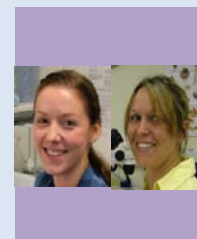


MESL's presence at conferences

Bryony Pearce and Jackie Hill attended the World Conference on Marine Biodiversity held in Aberdeen in September, where they presented the MESL School of Marine Taxonomy on an exhibition stall. Bryony also chaired a session on the biodiversity effects of natural and artificial structures in the marine environment and gave a presentation entitled 'Biodiversity associated with *Sabellaria spinulosa* reefs in the UK'. In October, Bryony and Jackie also attended a meeting on the 'New Challenges and Opportunities facing Marine Fisheries Science' in London where they gained valuable insights into fisheries sustainability and management. Bryony has also given presentations at a number of conferences in Scotland and Australia including the 8th Annual North Sea Decommissioning Conference in Aberdeen. Caroline Chambers and Ross Griffin recently attended the Coastal Partnerships Annual Forum, which enables MESL to remain up to speed with the important work of the partnerships in marine science and policy.

Continued Growth and Staff Secondment

MESL have welcomed a new member to their laboratory team. Carys Howells (left), a recent Marine Biology graduate from Swansea University, has joined MESL as a Junior Macro-benthic Taxonomist. In addition, MESL's Laboratory Tutor Lisa Grubb (right) has commenced an exciting secondment placement at Plymouth Marine Laboratory (PML) where she will work with PML staff on a variety of research and commercial projects. Lisa said "Working in a new lab with new challenges will give me some great experience that I can apply back in Bath". MESL wish Lisa luck on her placement.



Help us beat the January blues!

To help everyone beat the January blues, for this issue's competition we would like to hear your best marine-themed joke! The one that makes the most MESL staff laugh will win a MP3 player. Congratulations to Dr. Andrew Bellamy from Tarmac Marine Dredging Ltd for correctly identifying the shapes in last season's newsletter as aggregate dredging licence areas.